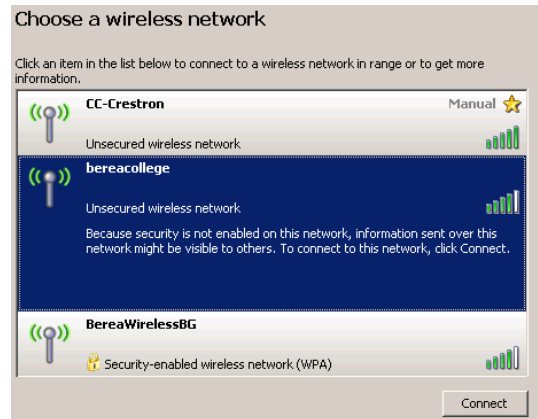


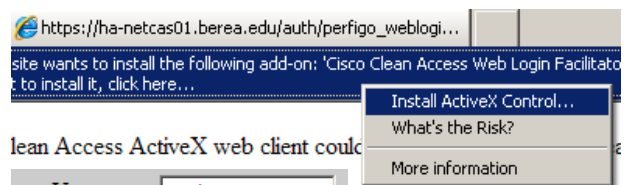
# Accessing the Berea College Wireless Network

## Instructions for Student, Faculty and Staff access using Internet Explorer

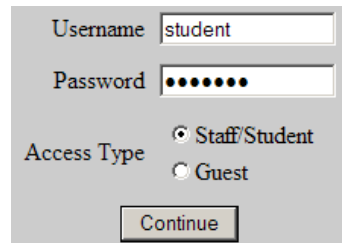
1. Double click on the Wireless Icon in your System Tray (down next to the clock)
2. Open the Wireless Network connection by selecting “bereacollege” and clicking “Connect”
3. Open a web browser
4. Internet Explorer will give a Cisco Clean Access Active X web client error, and will give you the option to click Continue to install the needed software. Please click “Continue”



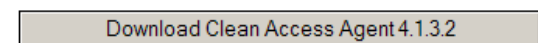
5. A yellow bar will appear at the top of your screen. Click on this bar and select “Install ActiveX Control”



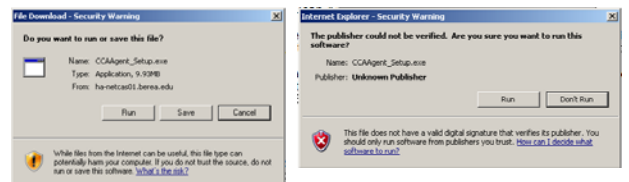
6. Once this has installed, a login page for Clean Access will come up. For Student/Faculty/Staff access log in with the username “Student” and Password “Student”



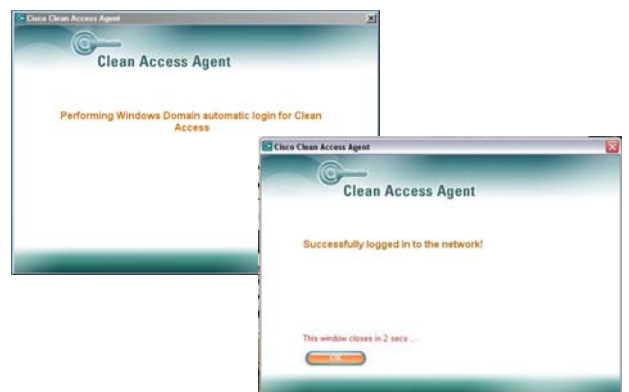
7. On the next screen click the Download button



8. Two security warnings will come up, click “Run” on each of them.



9. Once installed Clean Access will automatically log you in each time you use your computer on the Berea Network using your current Berea College Network username and password.



NOTE: Once installed you should not have to enter a username or password, if prompted for a username or password please restart your computer.