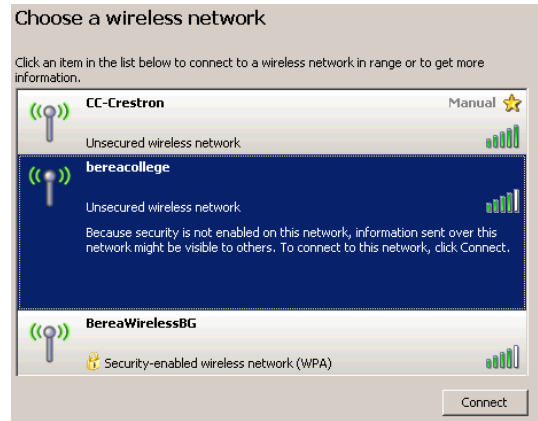


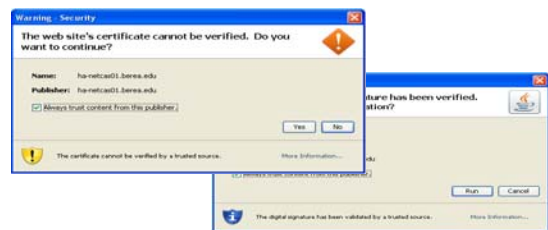
Accessing the Berea College Wireless Network

Instructions for Student, Faculty and Staff access using FireFox

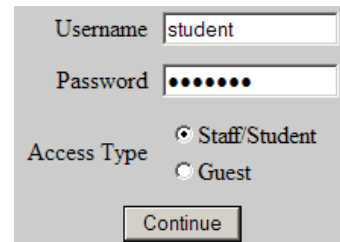
1. Double click on the Wireless Icon in your System Tray (down next to the clock)
2. Open the Wireless Network connection by selecting “bereacollege” and clicking “Connect”
3. Open a web browser



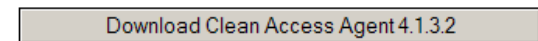
4. FireFox will require permission for the installation of additional software. Click “Yes” to verify that you wish to download the software from Berea’s server.
5. Click “Run” to install the software



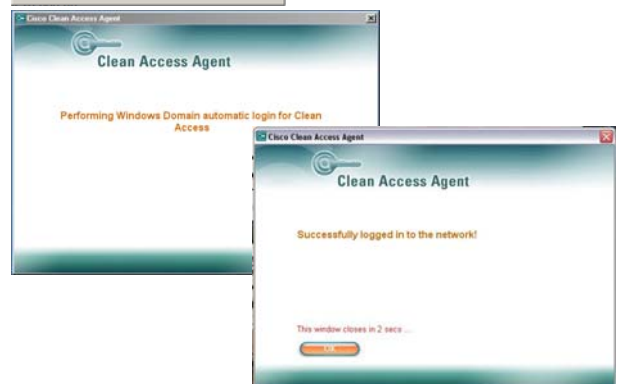
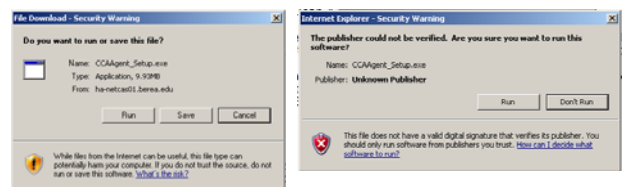
6. Once this has installed, a login page for Clean Access will come up. For Student/Faculty/Staff access log in with the username “Student” and Password “Student”



7. On the next screen click the Download button
8. Two security warnings will come up, click “Run” on each of them.



9. Once installed Clean Access will automatically log you in each time you use your computer on the Berea Network using your current Berea College Network username and password.



NOTE: Once installed you should not have to enter a username or password, if prompted for a username or password please restart your computer.