

# Accessing the Berea College Wireless Network

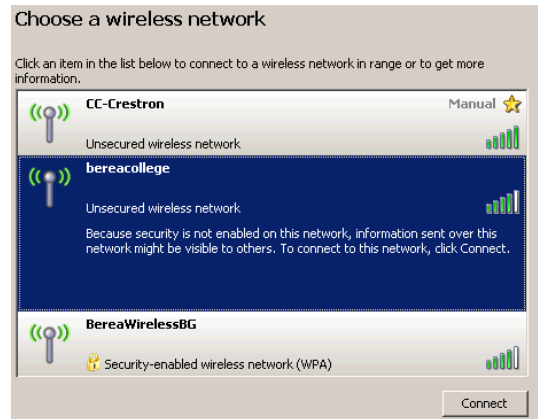
## Instructions for Guest access using Internet Explorer

1. Double click on the Wireless Icon in your System Tray (down next to the clock)

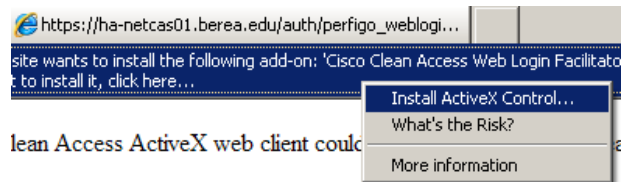
2. Open the Wireless Network connection by selecting “bereacollege” and clicking “Connect”

3. Open a web browser

4. Internet Explorer will give a Cisco Clean Access Active X web client error, and will give you the option to click Continue to install the needed software. Please click “Continue”

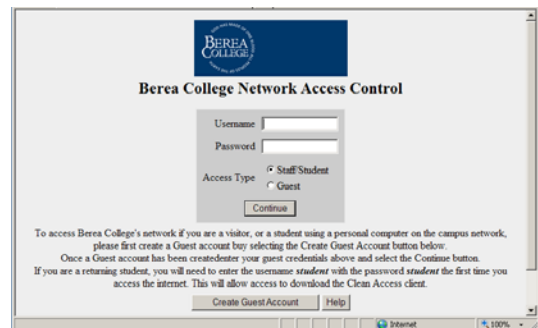


5. A yellow bar will appear at the top of your screen. Click on this bar and select “Install ActiveX Control”



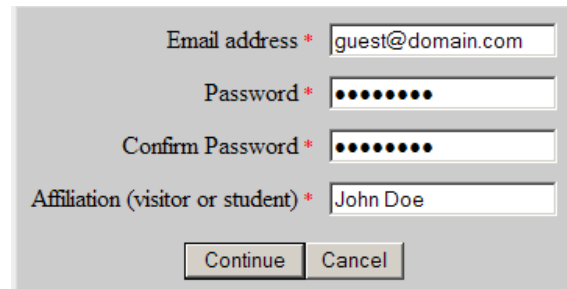
6. Once this has installed, a login page for Clean Access will come up. For Guest Access, click the button labeled “Create Guest Account” at the bottom of the screen

7. Accept the licensing information by checking the box marked “I accept” and then clicking “Continue”.



8. Provide information for your guest account and click “Continue”

9. Once this account has been created you will be returned to the screen above and asked to log in with this account. Information.



10. Finally you will receive confirmation that your login was successful, and you are ready to use the Berea College wireless network.

