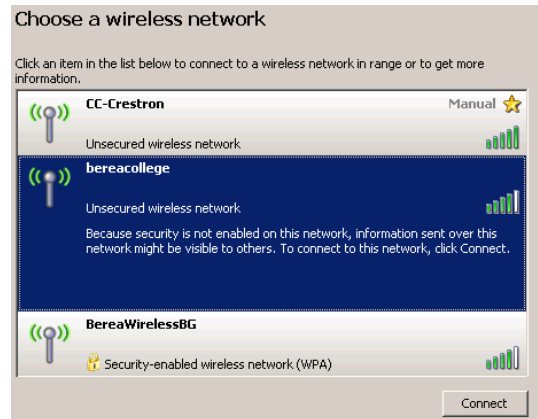


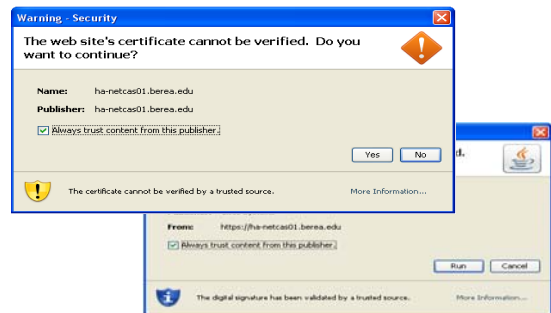
Accessing the Berea College Wireless Network

Instructions for Guest access using FireFox

1. Double click on the Wireless Icon in your System Tray (down next to the clock)
2. Open the Wireless Network connection by selecting “bereacollege” and clicking “Connect”
3. Open a web browser



4. FireFox will require permission for the installation of additional software. Click “Yes” to verify that you wish to download the software from Berea’s server.
5. Click “Run” to install the software



6. Once this has installed, a login page for Clean Access will come up. For Guest Access, click the button labeled “Create Guest Account” at the bottom of the screen
7. Accept the licensing information by checking the box marked “I accept” and then clicking “Continue”.



8. Provide information for your guest account and click “Continue”
9. Once this account has been created you will be returned to the screen above and asked to log in with this account. Information.

Email address *

Password *

Confirm Password *

Affiliation (visitor or student) *

10. Finally you will receive confirmation that your login was successful, and you are ready to use the Berea College wireless network.

