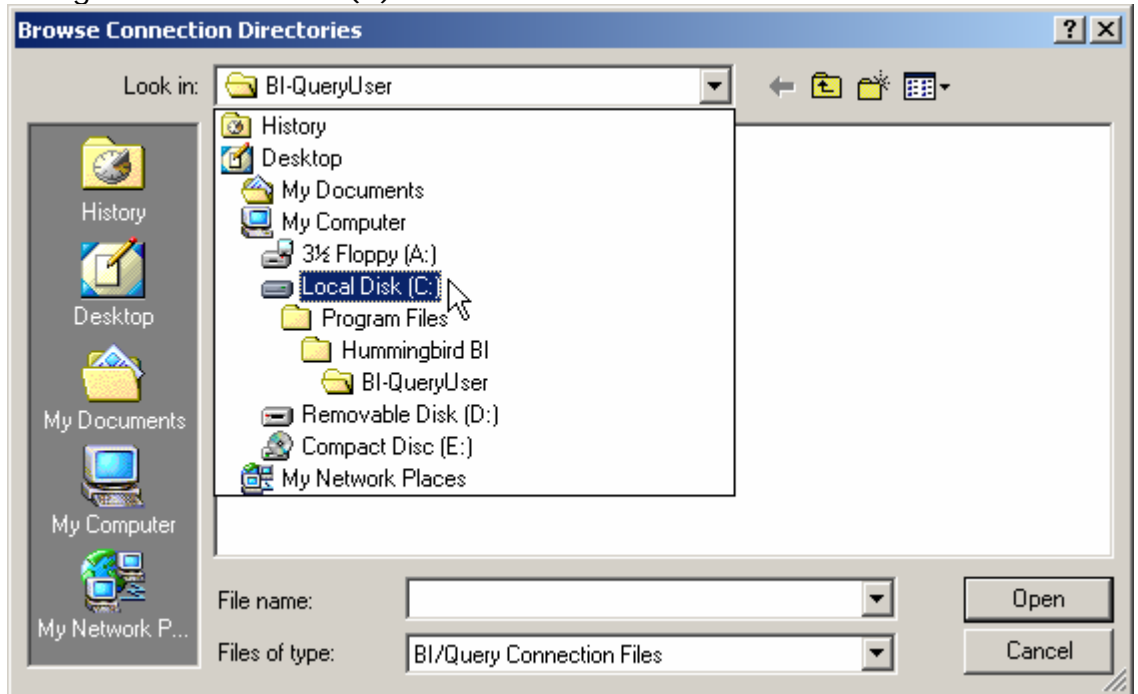
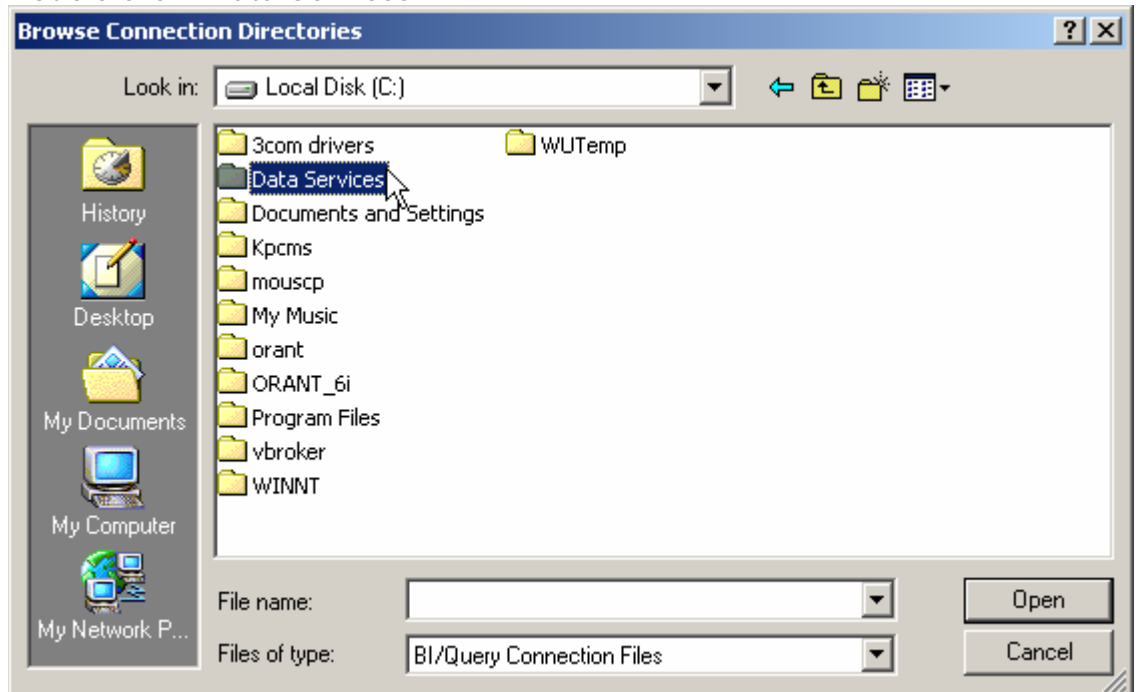


## Procedure to Establish BI-Query connection

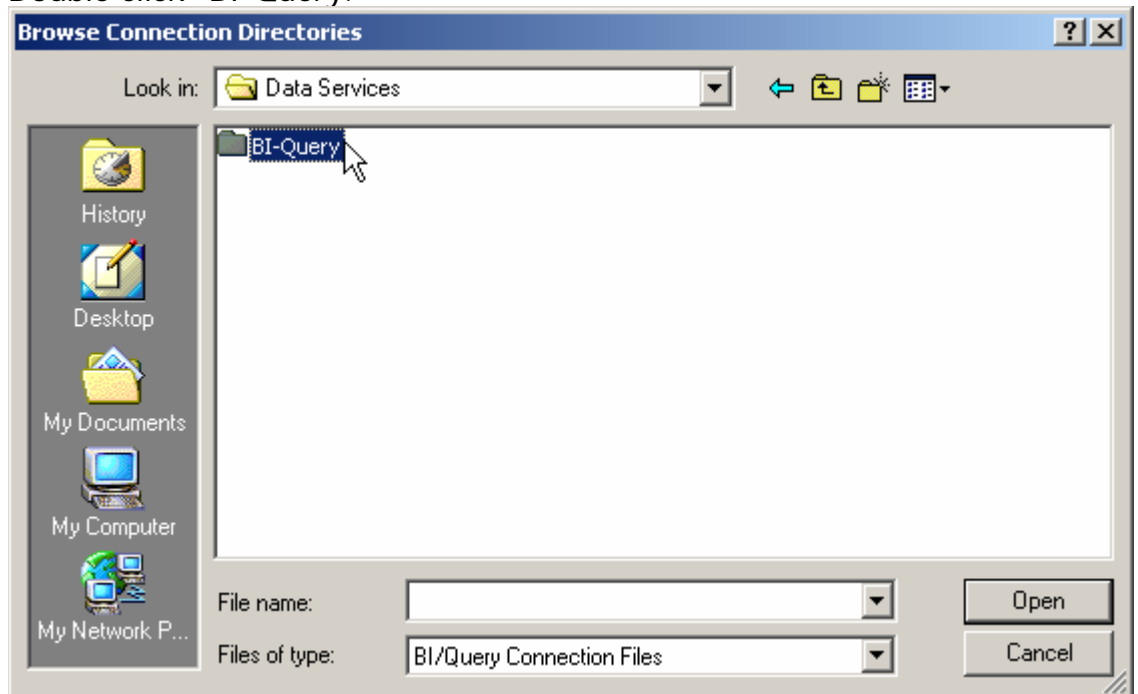
1. To establish a BI-Query connection, you must complete the below steps on one model (if you have more than one model, just do this on one model and this will work on all of them):
  - a. Open a BI-Query model.
  - b. Go under Host to Connections.
  - c. Click the Browse button.
  - d. Navigate to Local Disk (C):



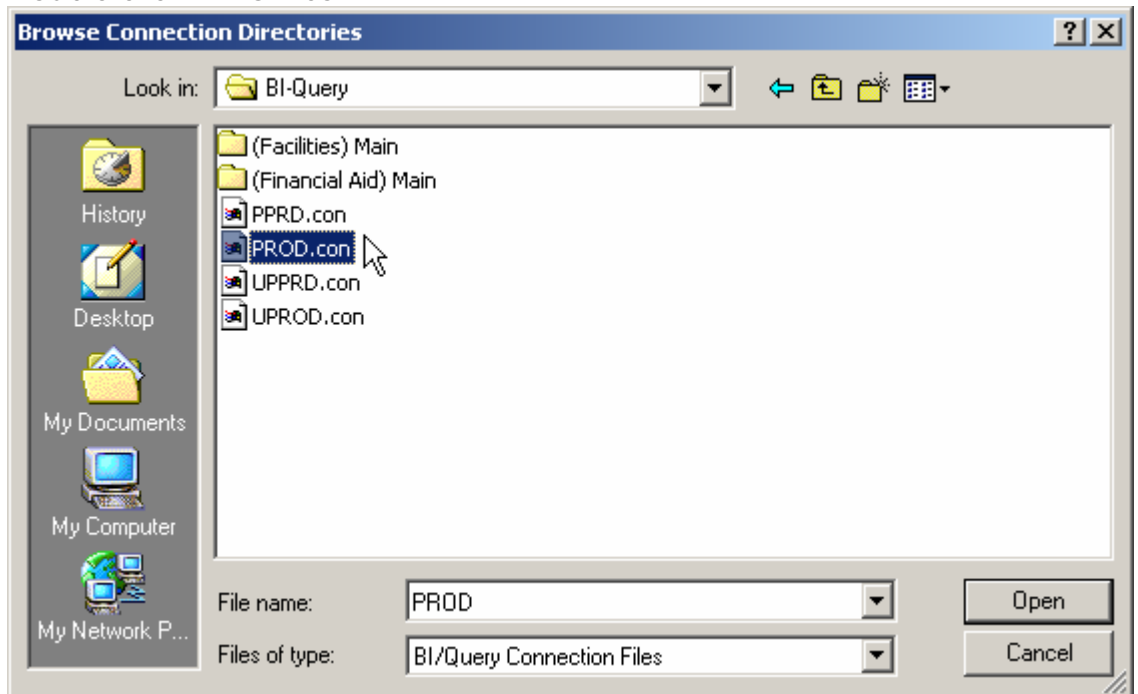
- e. Double click "Data Services."



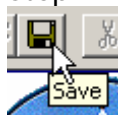
- f. Double click "BI-Query."



- g. Double click "PROD.con."



- h. Click the Set Default button in the Connections screen.  
i. Close out of the Connections screen by clicking Done.  
j. Click the Save icon at the top of your model (if the icon is highlighted so you can). If the Save icon is grayed out, skip this step.



- k. You are now ready to begin using BI-Query and your models as usual.